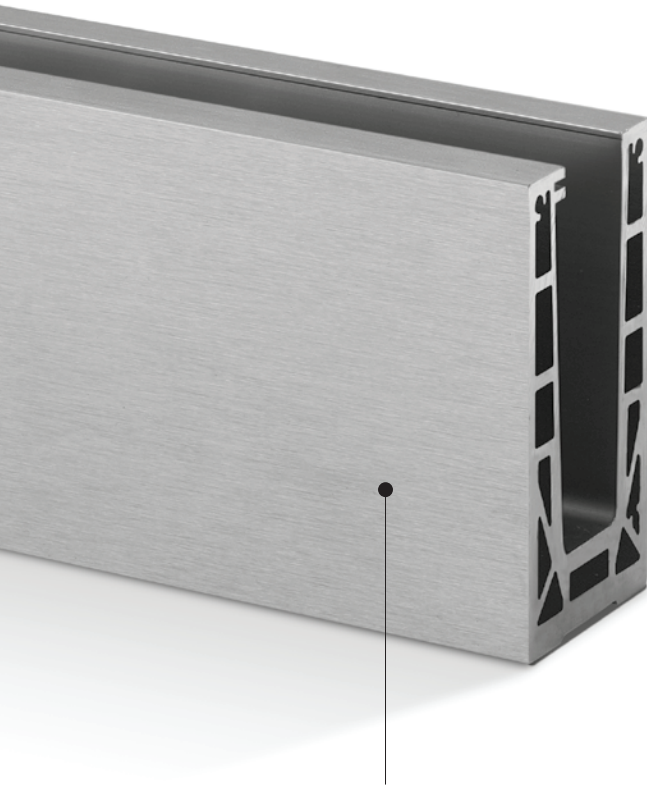




EASY GLASS® MAX

THE STRONGEST GLASS
RAILING EVER



The robust yet lightweight aluminum base shoe is easy to handle.

The toughest balustrade yet

This strongman railing is the perfect choice for your high-demand projects! Easy Glass Max copes with heavy line and wind loads. This makes it ideal for public areas such as skyscrapers, stadiums, airports and shopping malls.

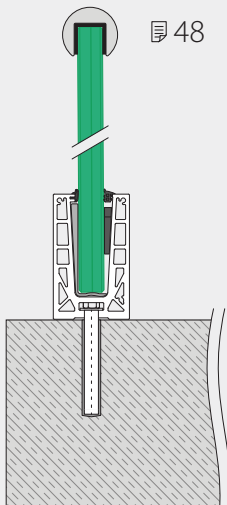
- Heavy use railings for indoor and outdoor settings, including stairs
- Simple installation with hexagon-head anchors
- Ideal for installation directly on concrete or steel structures
- Quick and easy glass mounting with the Safety Wedge System (wedges and rubber set)
- Can be combined with:
 - Q-railing's glass mounted handrails, cap rails, U-profiles and edge protection
 - Q-lights Linear Light for LED-lit handrails and cap rails



EASY GLASS® MAX VARIANTS

Max Top mount

- Also for in-floor mounting

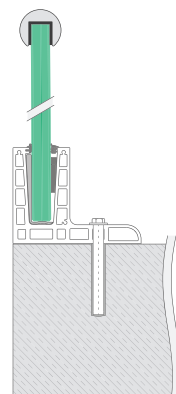


***Only available on demand.**

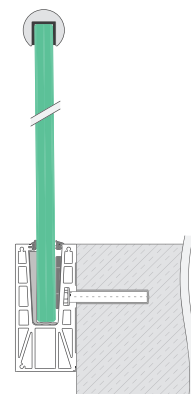
Does your project qualify for one of these custom base shoes, then please contact us to discuss the options.

Max F* Top mount

- Can be mounted at or beyond the edge of a surface

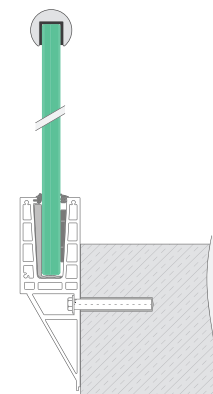


Max* Fascia mount



Max Y* Fascia mount

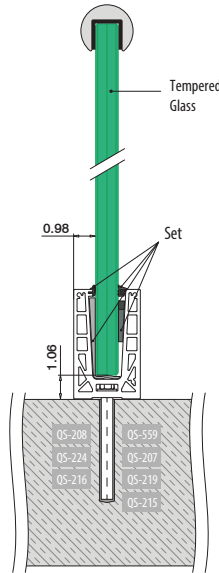
- Can be mounted at or beyond the edge of a surface



Railing bases

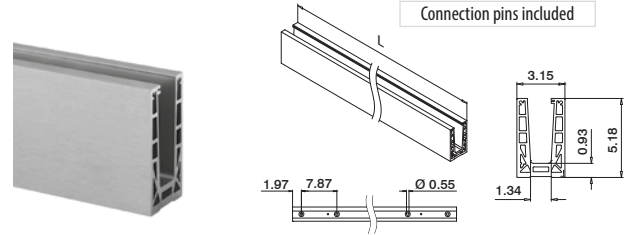
All dimension drawings are in inches

EASY GLASS® MAX - Base shoe, top mount



Please refer to the respective certificates for specifications such as mounting details, glass dimensions and glass type (laminated glass / monolithic glass).

Assembly information:
q-railing.com/
qr-max



MOD 6926

Aluminum Brushed, anodized

OUTDOOR

16.6926.000.18

See overview on 226

L = 8.2' (2500 mm)



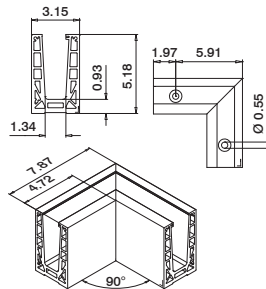
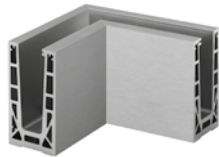
For more information or project photos, please visit our website:
www.q-railing.com

Railing bases

EASY GLASS® MAX - Base shoe corners, top mount



Inner corner



MOD 6313

Aluminum Brushed, anodized

OUTDOOR

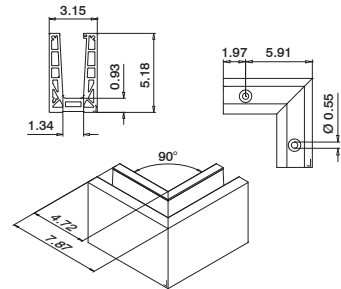
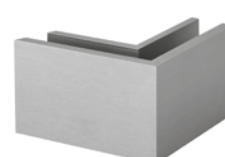
16.6313.017.18

See overview on 226

1



Outer corner



MOD 6314

Aluminum Brushed, anodized

OUTDOOR

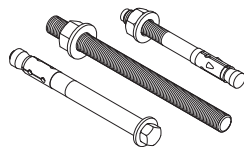
16.6314.017.18

See overview on 226

1



Q-INFO



All anchors
See 226 – 233

Q-INFO

PREFIX

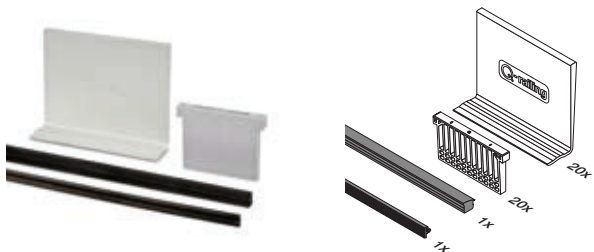
We can deliver the following service according to your specification:

- Cutting
- Bending

Contact us for details.

Railing bases

EASY GLASS® MAX - Safety Wedge System (rubber and wedges set)



MOD 6907

Accessories

	T (glass thickness)	
19.6907.922.00	27/32" (21.52 mm)	L = 16.4' (5000 mm)
19.6907.926.00	1" (25.52 mm)	L = 16.4' (5000 mm)
19.6907.932.00	1-1/4" (31.52 mm)	L = 16.4' (5000 mm)

Safety Wedge System:
Glass is being clamped. Drilling is not necessary.

Accessories

EASY GLASS® - Multitool

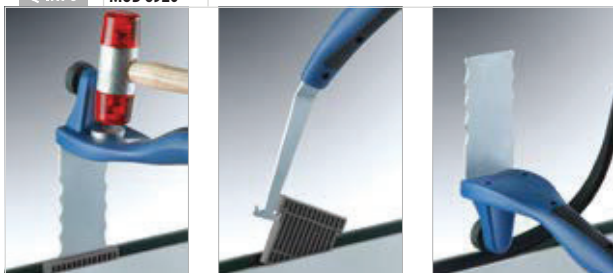


MOD 6920

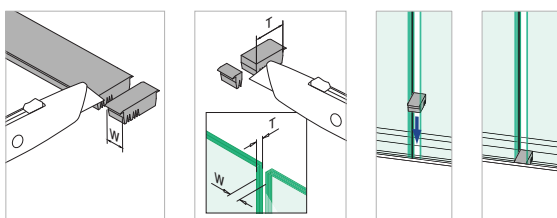
Accessories

	Q	
19.6920.000.00	Q-71	1

Q-INFO MOD 6920



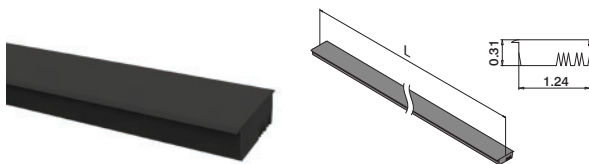
Q-INFO MOD 6907



Railing bases

All dimension drawings are in inches

EASY GLASS® MAX - Cover / intermediate rubber



MOD 6907

Accessories

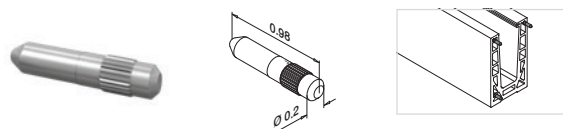
19.6907.001.00

L = 8.2' (2500 mm)



Railing bases

EASY GLASS® - Connection pin



MOD 3005

316

OUTDOOR

14.3005.000.00

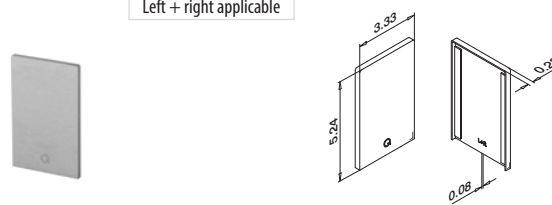
6



Railing bases

EASY GLASS® MAX - End fittings, top mount

Left + right applicable



MOD 6734

Aluminum

Brushed, anodized

OUTDOOR

16.6734.017.18

1

Q-INFO MOD 6734

